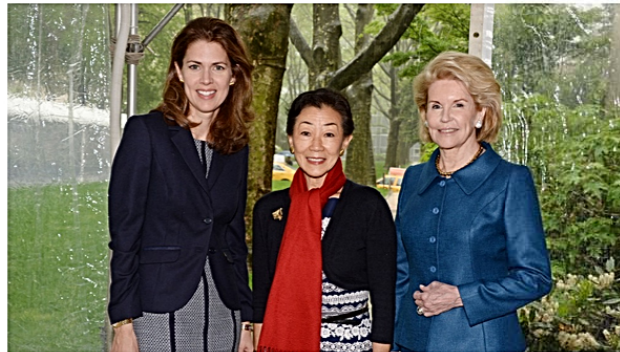


## WOMEN & SCIENCE: THE ROCKEFELLER UNIVERSITY HOSTS ELAINE FUCHS FOR ANNUAL SPRING LUNCHEON

Written by AVENUE Insider on June 3, 2014. Posted in Parties & Events

[Recommend](#)  [Tweet](#)  [Pin it](#) [+](#) [e](#) [m](#)



[View 4 Photos in the Gallery](#)

[Find More In: Parties & Events](#)

In a world of rapidly growing technology and medical advances, more and more treatments for once fatal illnesses and conditions are being discovered and created. And more today than ever, women are playing an essential role in this advancement. A big contributor to the success of such women is The Rockefeller University's Women & Science Initiative.

The Rockefeller University is a world-renowned center for research and graduate learning in the biomedical sciences, chemistry and physics. It was founded as the nation's first institute for medical research. Twenty-four researchers associated with Rockefeller have been awarded the Nobel Prize.

The university is devoted to improving human health through transformative discoveries and advanced education in the life sciences. Established in 1998, the W&S initiative highlights the role of these discoveries and research in relation to women's health. It also showcases the contributions of women scientists and raises funds to support their work.

Over the past 16 years more than 3,000 people have attended W&S programs featuring Rockefeller scientists and guest speakers. The lecture and luncheon on May 15 was no different. Dr. Elaine Fuchs, a Rebecca C. Lancefield Professor at Rockefeller, spoke about stem cells and their relation to regenerative medicine, aging and cancer. A number of VIPs graced the audience including designer **Tory Burch**, executive director of Pershing Square Sohn Cancer Research Alliance **Olivia Flatto**, HRH Princess Firyal of Jordan, host and Rockefeller president **Marc Tessier-Lavigne**, **Lulu Wang**, **Lisa McCarthy**, **Diane Burke**, and **Robin Neustein**.

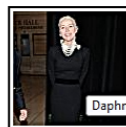
Dr. Fuchs is also an investigator for the Howard Hughes Medical Institute and a member of the National Academy of Sciences and its Institute of Medicine. Her research on the biology of skin has been extremely influential in clarifying the roles that stem cells play in building and regenerating tissues. Studies that she's conducted with the assistance of her collaborators have revealed unanticipated opportunities for therapies involving stem cells.

She is currently exploring the theory that tumors arise from stem cells gone askew which increases the possibility that scientists could intervene in this process for cancer therapy. One of the most crucial medical searches ongoing today is a cure for cancer - could this be a small breakthrough to get scientists one step closer to that find?

Partners in Discovery, the fundraising arm of W&S, has raised more than \$22 million in support of talented women pursuing careers in the sciences at Rockefeller. Dr. Fuchs was one of these women. She has won numerous awards and honors for her research and studies. Her acclaim has boosted her to the forefront of biomedical research. Without the support of the W&S initiative, it would have been difficult for her to receive the education and resources needed to provide the philanthropic services and achieve the successes she has had thus far.

For more information visit [www.omenandscience.rockefeller.edu](http://www.omenandscience.rockefeller.edu)

You might like:



Daphne Guinness



Avenue FEBRUARY 2014



It's all glitz and glam at the

## THE MAGAZINE

JUNE 2014



Sailing Through Summer  
True Hampton Girl  
Welcome to Shelter Island!  
Serena & Lily, Year Two  
New York Spaces  
Hampton Black Book  
Best In Class

Popular Recent Commented

### WEDDING BELLS: DAX MILLER AND ALEXANDRA VON FURSTENBERG

Alexandra Von Furstenberg, who is the youngest of the three fabulous Miller sisters, including Pia and Marie-Chantal, who were much... [Read More](#)

### GIVE & TAKE: A CONVERSATION WITH DENISE LEFRAK ON PHILANTHROPY

Denise LeFrak is a woman of many talents; she is an accomplished author, real estate maven, philanthropist and above all... [Read More](#)

### A NIGHT OF SPARKLING JEWELS AND EMBELLISHED GOWNS: KAYAT'S 2014 FALL COLLECTION AT MARINA B

Kayat previewed its Fall 2014 collection exclusively at Marina B boutique on February 11 during New York Fashion Week. Hosted... [Read More](#)

### A CONVERSATION WITH DENISE LEFRAK ON PHILANTHROPY

THE LUDLOW HOTEL X GUEST OF A GUEST - A small group of New Yorkers came together for a dinner celebration at the Ludlow Hotel for the re-launch of... [Read More](#)



### Siman Tu Gallery moving sale

**30-50% off, Dig your treasure!**

860 Lexington Ave. 212.327.4626

@AVENUEinsider



LATEST TWEETS:

RT @MBerkeHammer: @AVENUEinsider @Baccarat @SMAPR @RafCard Check out Baccarat's grand opening! <http://t.co/GDLOUnDrUH>

@Haleyfriedlich's favorite from @BadgleyMischka #resort2014 preview! <http://t.co/HS6WsAyiR1>

@BadgleyMischka #resort2014 preview... #Stunning!! <http://t.co/5ud5Uy5Zcg>

Wildlife Conservation Society's Evening at the Central Park Zoo #wildnight #wcsgala2013 @TheWCS <http://t.co/UDWJ5MhEMQ>

rain, rain go away!!